

DESCRIPTION

PRODUCT CODE: **SC30V**

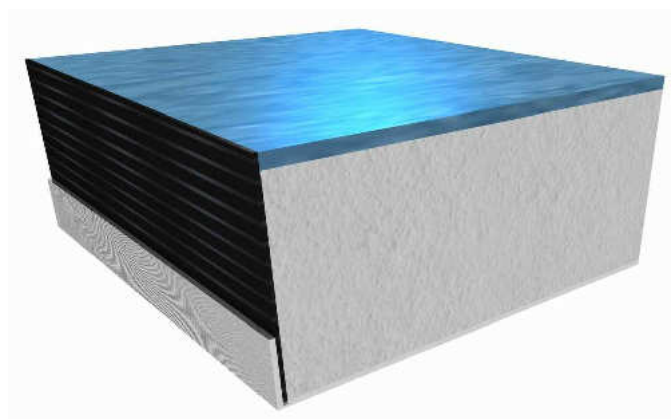
Panel type SC30V, manufactured from CBI Europe, dimension 600x600x30.5 mm, core made by high density calcium sulphate, perimetral edge ABS 0,5 mm. Bottom covering galvanized steel dish 0.5 mm. Top Covering to be selected from the client.

APPLICATION USE

Offices - Private buildings - Public Buildings - Libraries - Banks - Museums - Computer Rooms

TOP COVERING

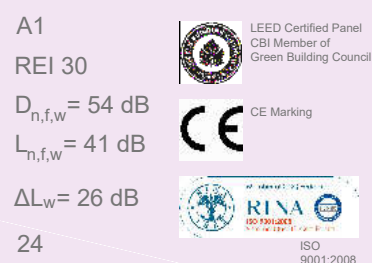
Bare - Alufoil - Hpl - Pvc - Linoleum - Rubber.



TECHNICAL SPECIFICATIONS

Dimension	600 x 600 mm
Thickness	30.5 mm
Weight	14.50 Kg
Panel Core	Calcium sulphate
Density Core	1300 Kg/mc +/-5%
Tolerance Dim.	+/-0.3mm
Life Expectancy	25 Years

Fire reaction <i>UNI EN 13501-1:</i>	A1
Fire resistance <i>UNI EN 13501-2:</i>	REI 30
Airborne Insulation <i>UNI EN ISO 10848-2:</i>	$D_{n,f,w} = 54$ dB
Impact Sound Insulation <i>UNI EN 140-12 / 717-1:</i>	$L_{n,f,w} = 41$ dB
Walking Sound Insulation <i>UNI EN ISO 10140-3:</i> <i>UNI EN ISO 717-2:</i>	$\Delta L_w = 26$ dB
Product Warranty (months):	24



TECHNICAL FEATURES - UNI EN 12825

STRUCTURE SYSTEM	POINT OF PRESSURE	DEFLECTION 2.5 mm	ULTIMATE LOAD	LOADING CLASS	
CBI/ST	Center of panel	4.7 kN	9.7 kN	4	
	Middle of panel edge	3.6 kN	5.7 kN	1	
	Diagonal 70 mm	5.4 kN	6.3 kN	2	
CBI - CR	Center of panel	4.9 kN	10.2 kN	5	
	Middle of panel edge	3.8 kN	6.0 kN	2	
	Diagonal 70 mm	5.7 kN	6.6 kN	2	
IF Tubolar	Center of panel	5.2 kN	10.7 kN	5	
	Middle of panel edge	4.0 kN	6.3 kN	2	
	Diagonal 70 mm	5.9 kN	6.9 kN	2	